



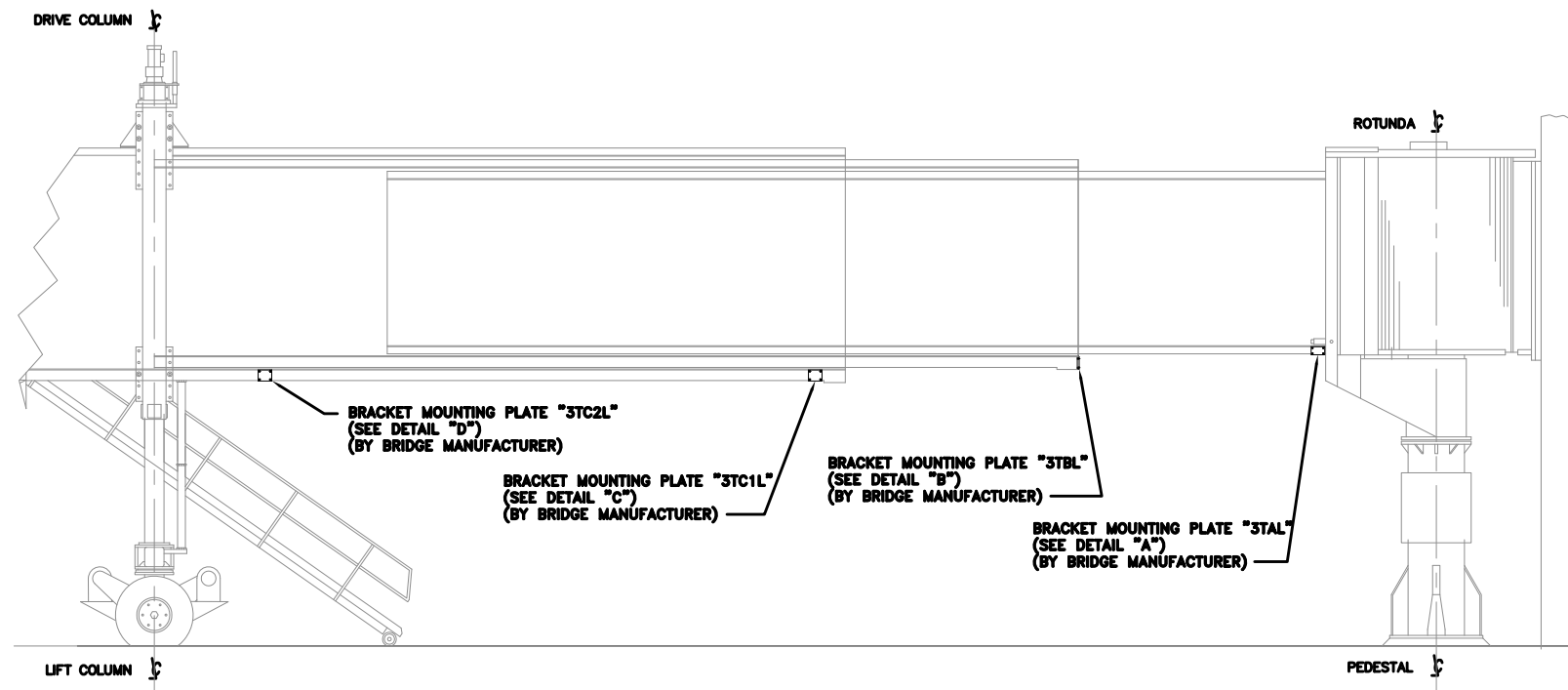
Sea-Tac International Airport

Facilities and Infrastructure System
Mechanical System Standards

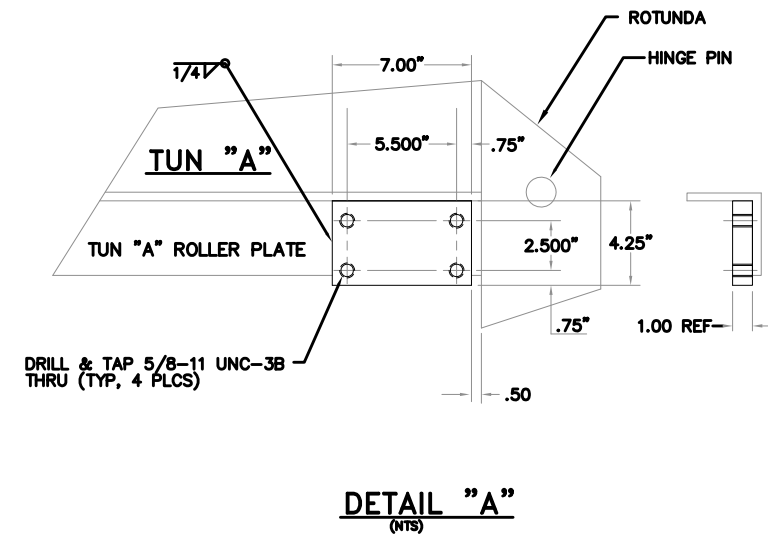
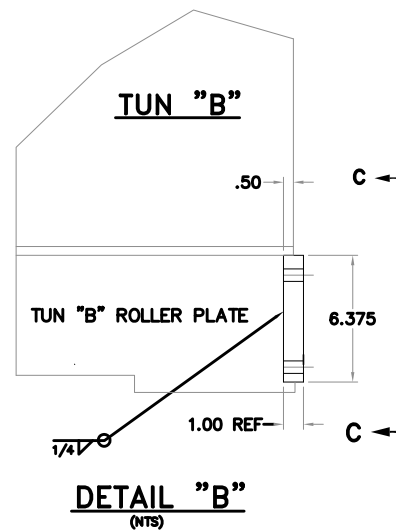
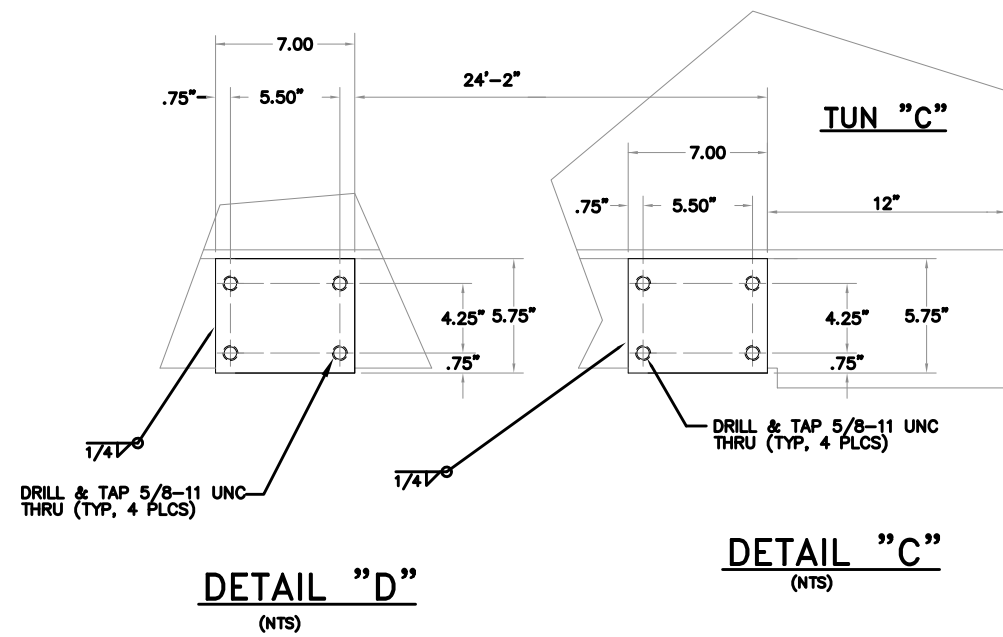
APPENDIX F

PC Air System

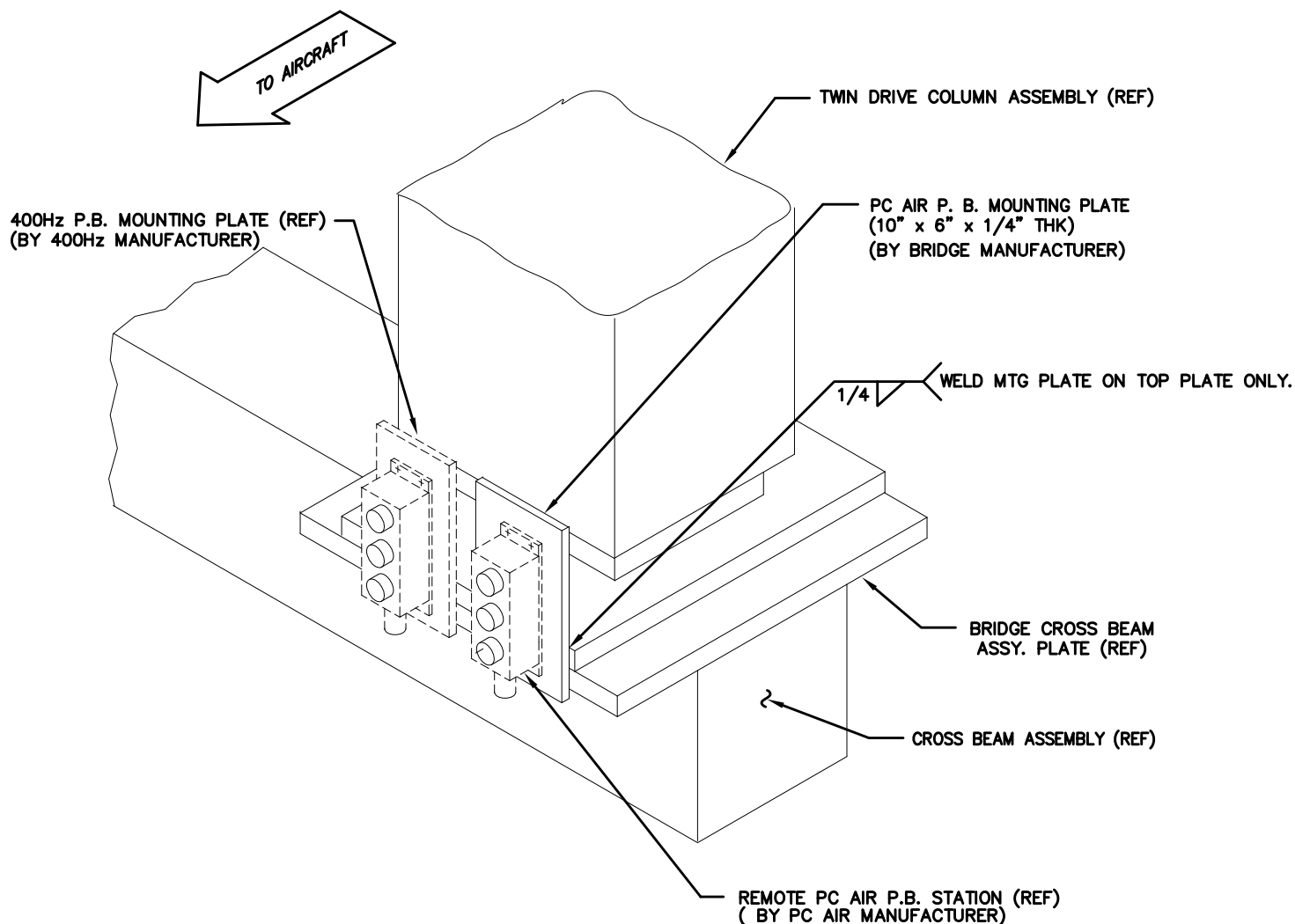
Revised January 22, 2020



TELESCOPING DUCT BRACKET PLATE LOCATION
(FOR ZERO RETRACTION LIMIT)



DWG. TITLE: SECTION: xxxx		
PCA DETAILS		
DATE: 01/14	___: ___	DIAG. NO. 1
LAST REVISION: _	___: ___	



PUSHBUTTON STATION INSTALLATION DETAILS

(LEFT HAND SIDE MOUNTED)

DWG. TITLE: SECTION: xxxx

PCA DETAIL

DATE: 12/01

LAST REVISION: —

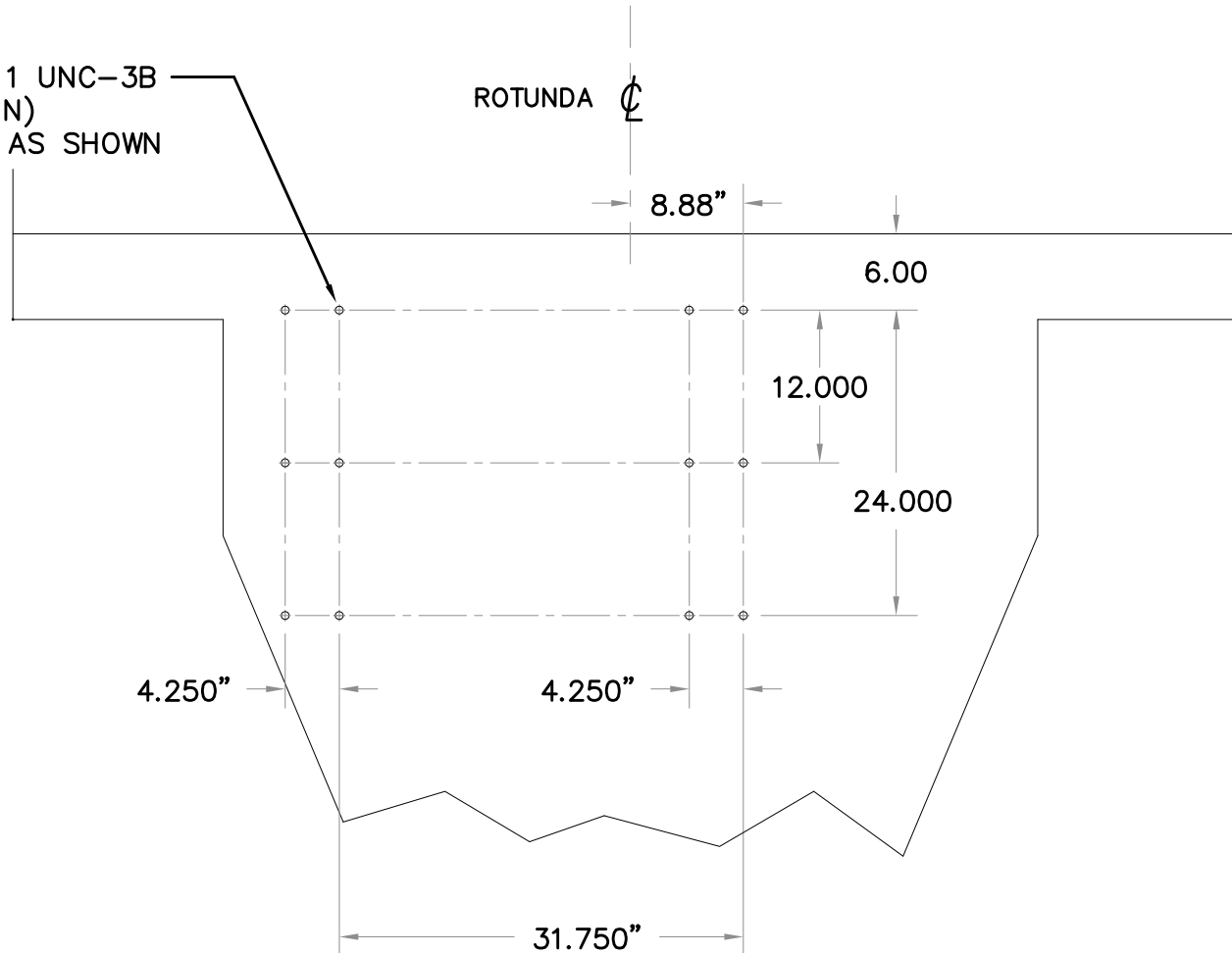
—: —

—: —

DIAG. NO.

2

DRILL & TAP 5/8-11 UNC-3B
(1" DEEP MIN)
TYP 12 PL, LOCATE AS SHOWN



AHU MOUNTING FRAME HOLES LOCATION

(FOR LEFT HAND TAD)
LOOKING TOWARDS BLDG)

NOTES: UNLESS OTHERWISE SPECIFIED

DWG. TITLE: SECTION: xxxx

PCA DETAIL

DATE: 12/01

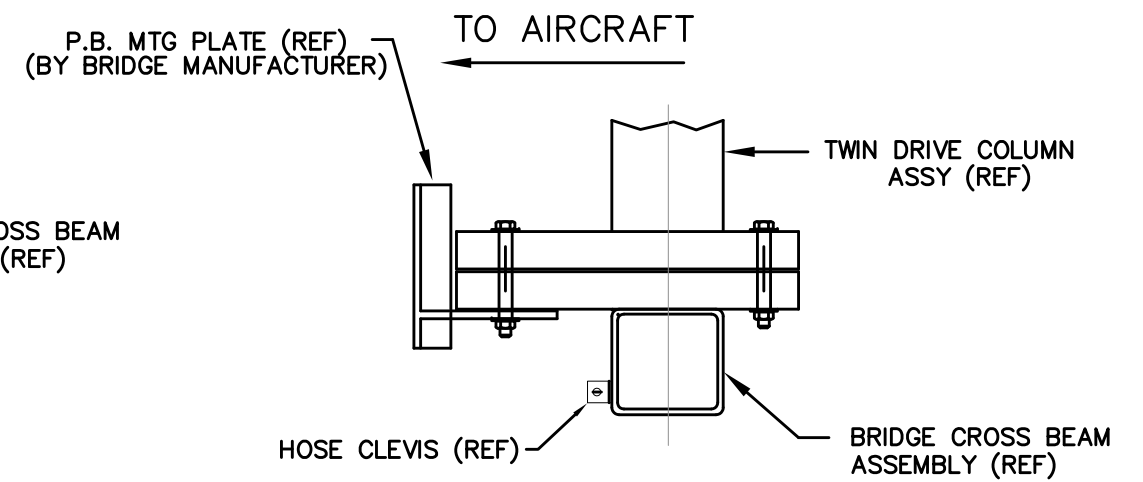
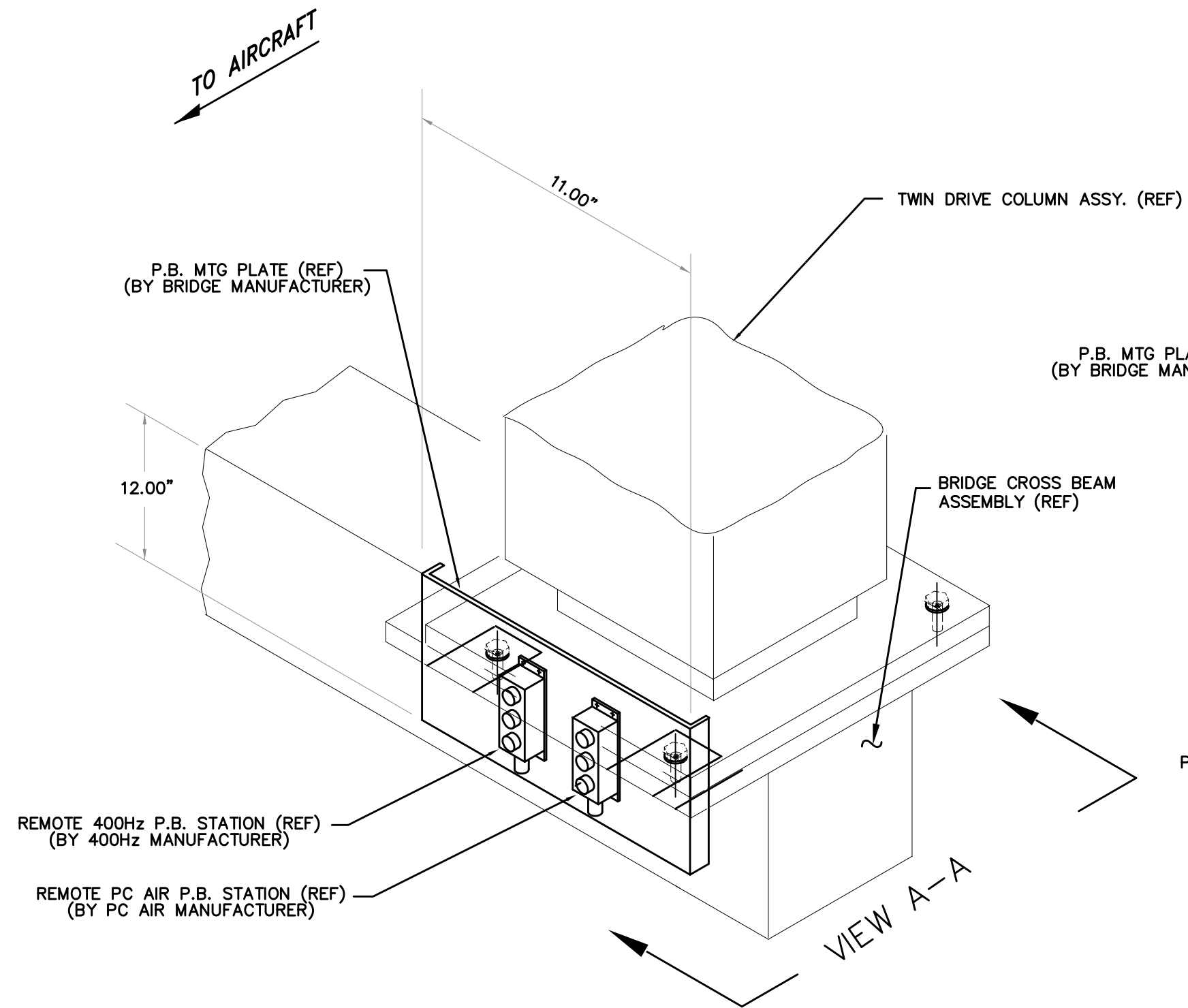
___: ___

DIAG. NO.

LAST REVISION: _

___: ___

3



VIEW "A-A"

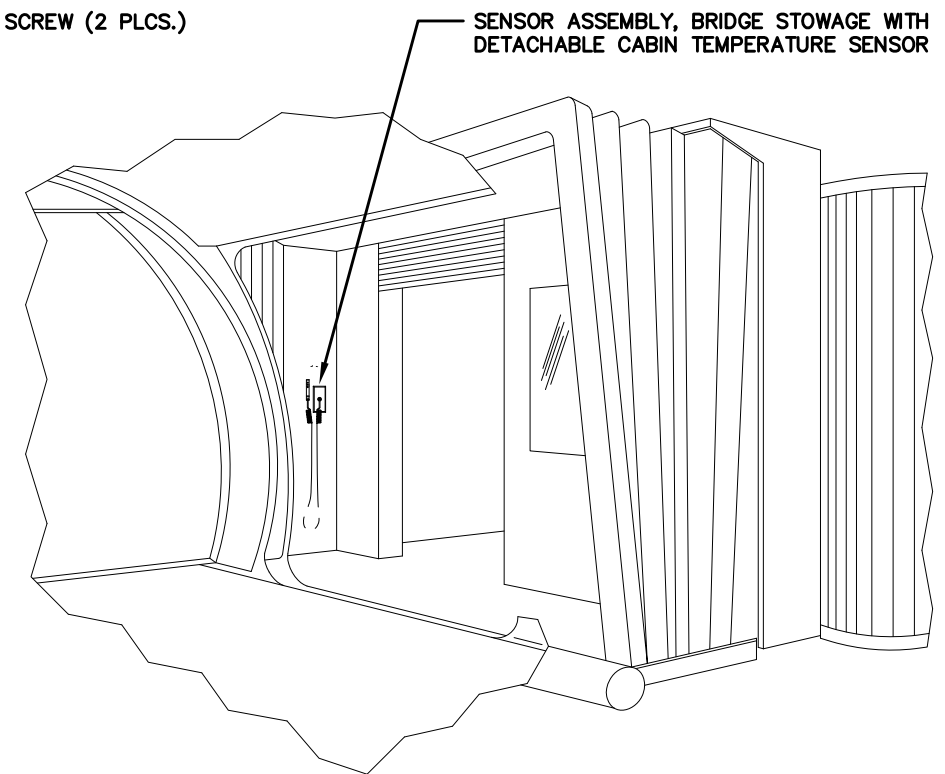
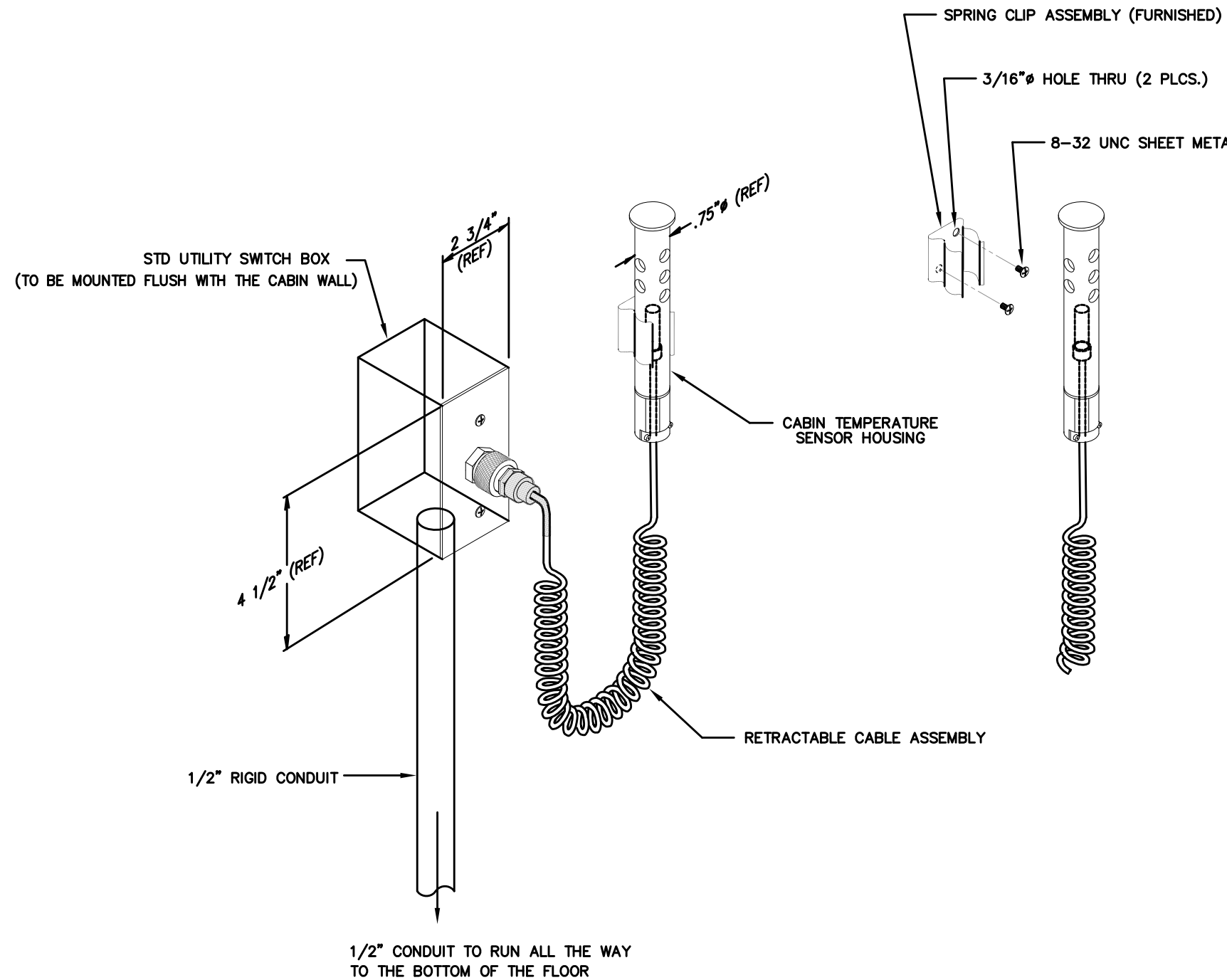
NOTE:
PROVIDE SPACE FOR HOSE BASKET CLEVIS LOCATION

P.B. MOUNTING PLATE DETAIL (ALTERNATE)

(SCALE : NONE)

NOTES: UNLESS OTHERWISE SPECIFIED

DWG. TITLE: SECTION: xxxx		
PCA DETAIL		
DATE: 12/01	__:	__
LAST REVISION: _	__:	__
		DIAG. NO. 4

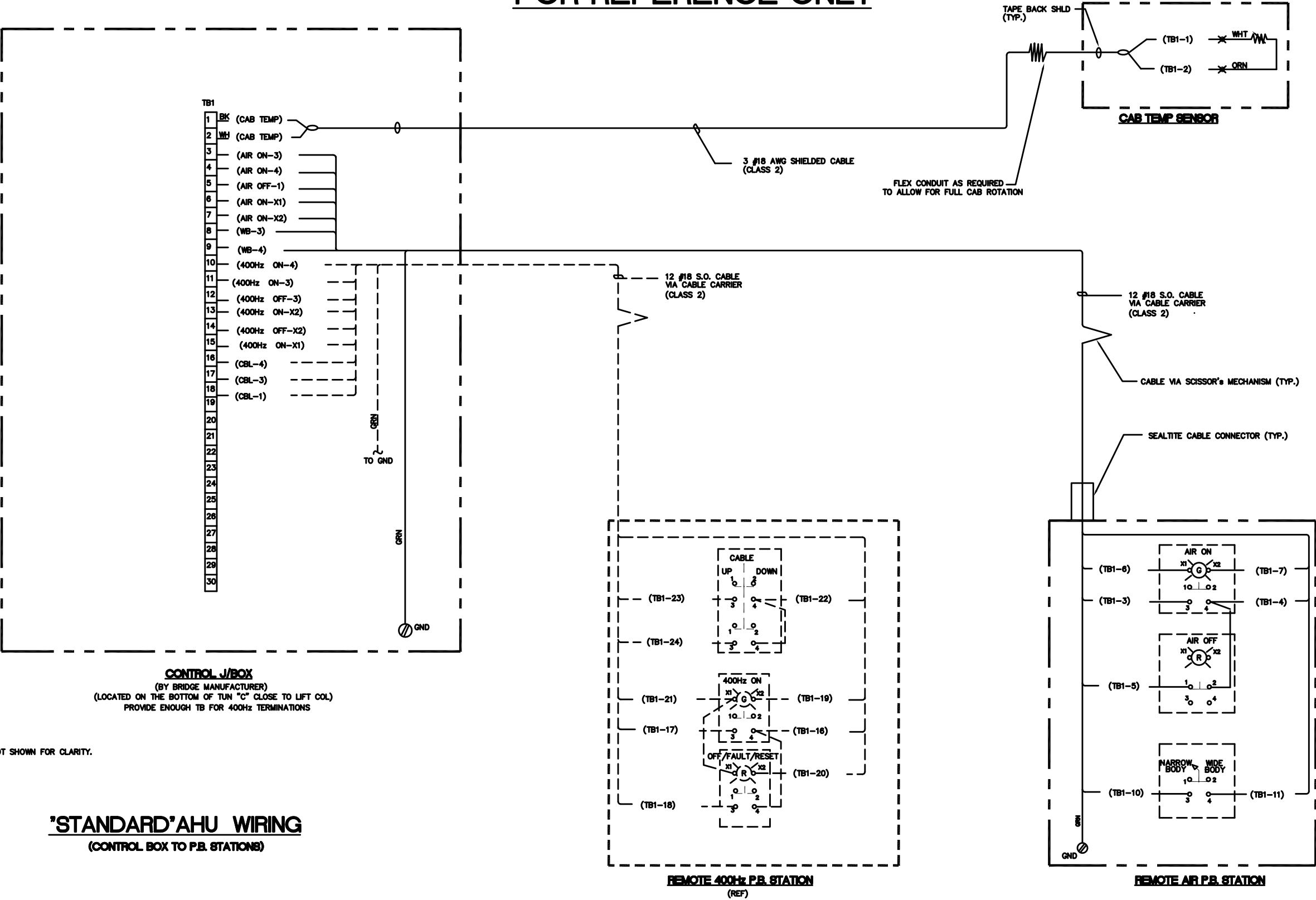


LOOKING INSIDE OF BRIDGE

NOTES: UNLESS OTHERWISE SPECIFIED

DWG. TITLE: SECTION: xxxx		
PCA DETAILS		
DATE: 12/01	__:	__
LAST REVISION: _	__:	__
		DIAG. NO. 5

FOR REFERENCE ONLY



1. WIRE NUMBERS ARE NOT SHOWN FOR CLARITY.

NOTES:

'STANDARD' AHU WIRING
(CONTROL BOX TO P.B. STATIONS)

DWG. TITLE: SECTION: xxxx

PCA DIAGRAM

DATE: 12/01

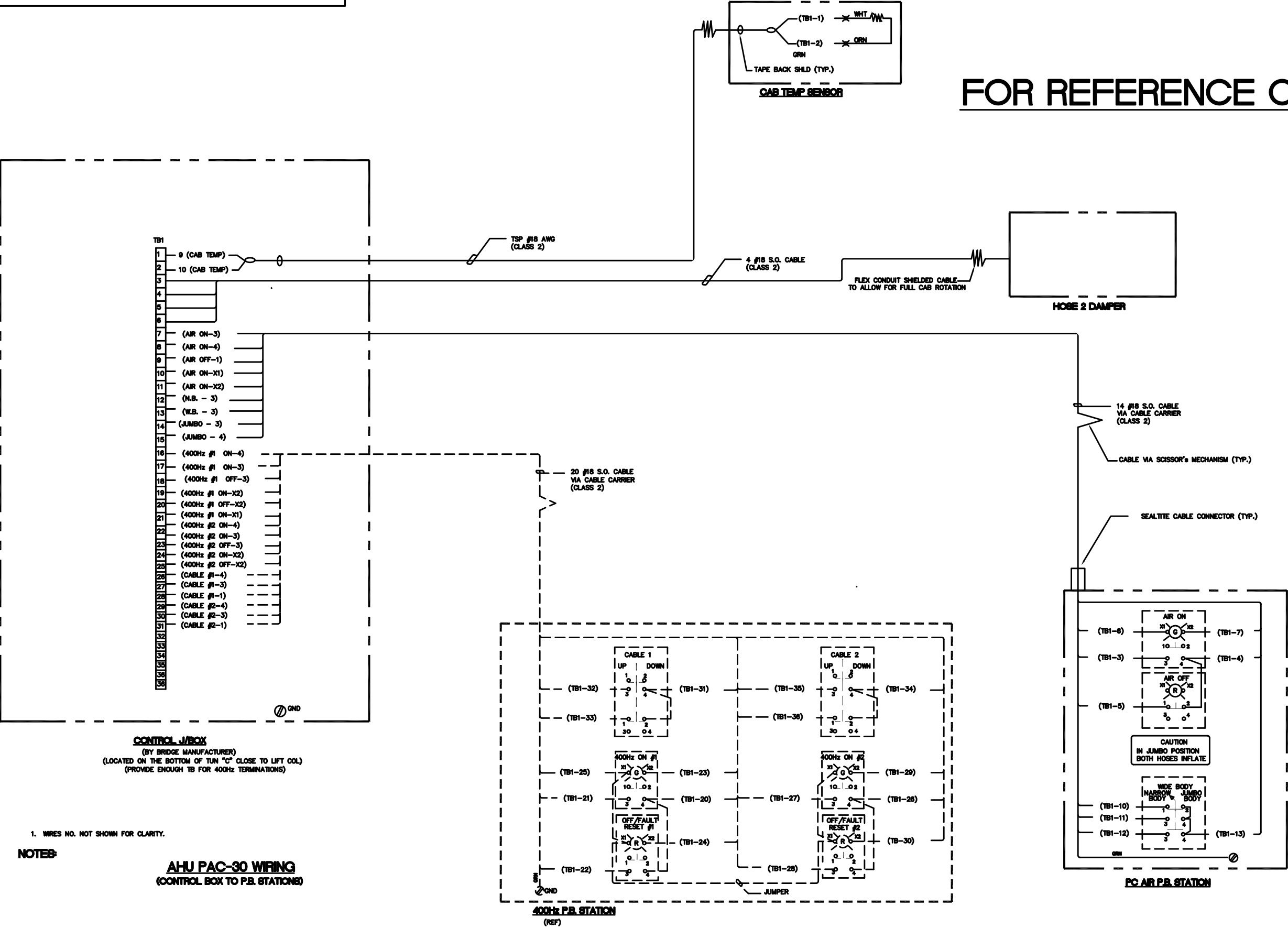
LAST REVISION: _

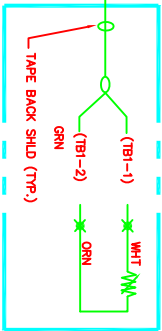
DIAG. NO.

7

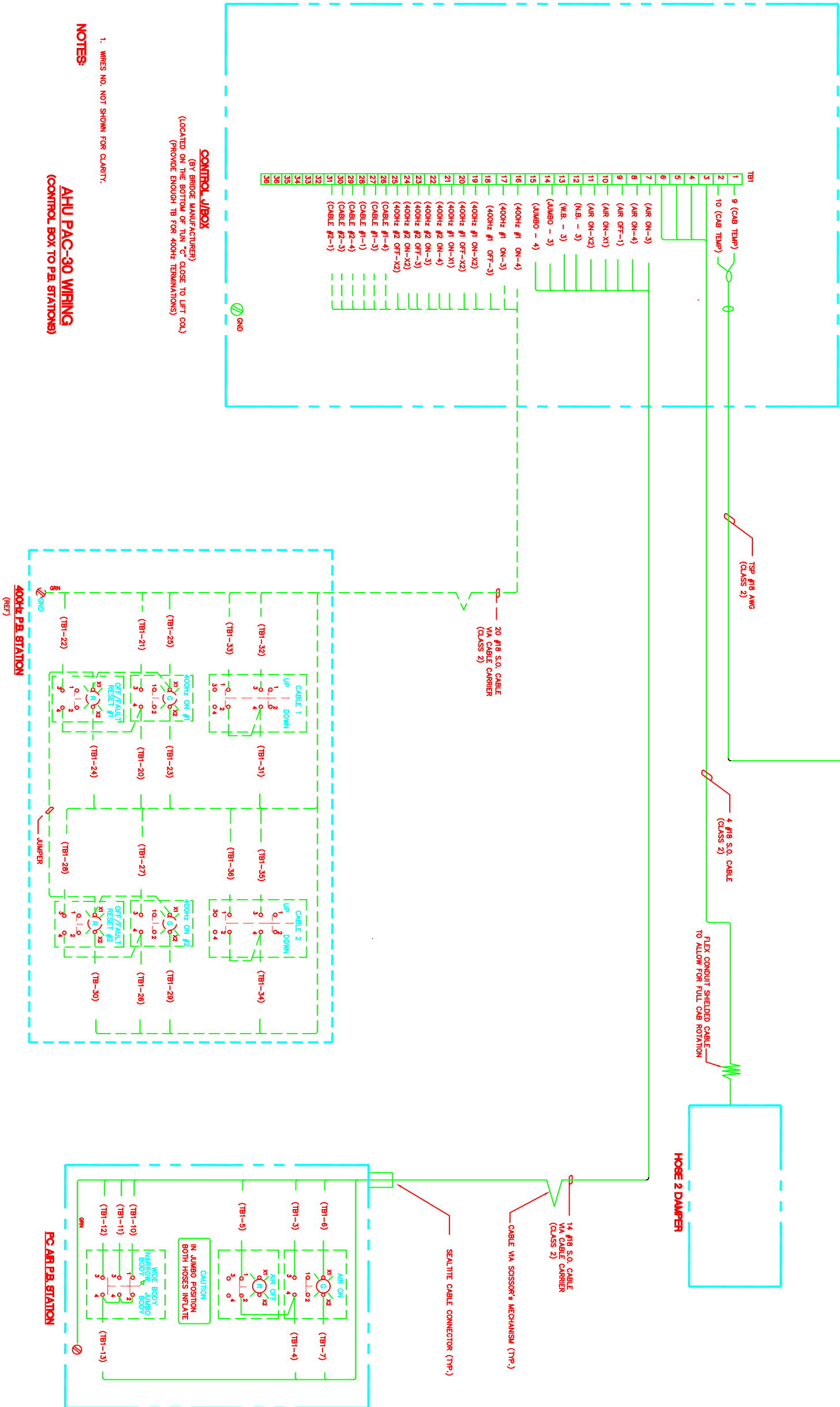
NET PROPRIETARY INFORMATION
This drawing, specification, or description, together with all information and know-how disclosed thereby, includes data which are the exclusive property of NET. No disclosure to others, either in the United States or abroad, or reproduction of any part of the information supplied is to be made, and no manufacture, sale or use of any device, process, or composition of matter disclosed therein, whether patented or not, shall be made except by written authorization of NET. This notice is not intended to nullify or limit rights granted to U.S. Government by contract.

FOR REFERENCE ONLY

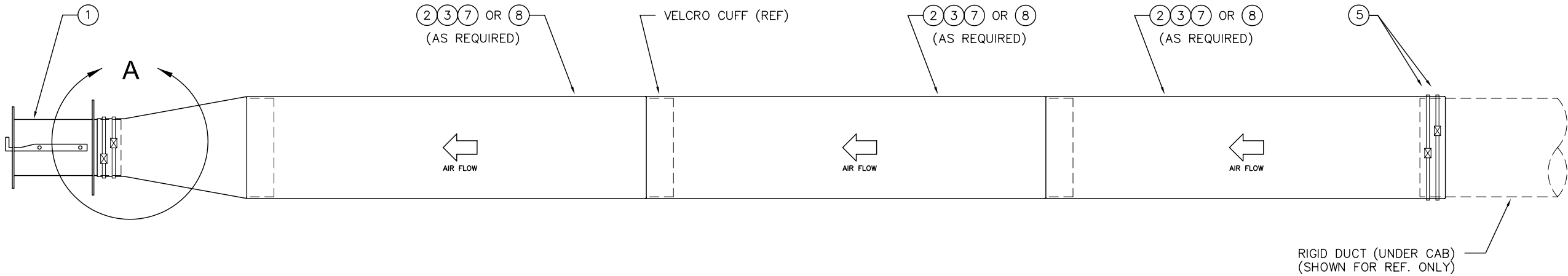




FOR REFERENCE ONLY

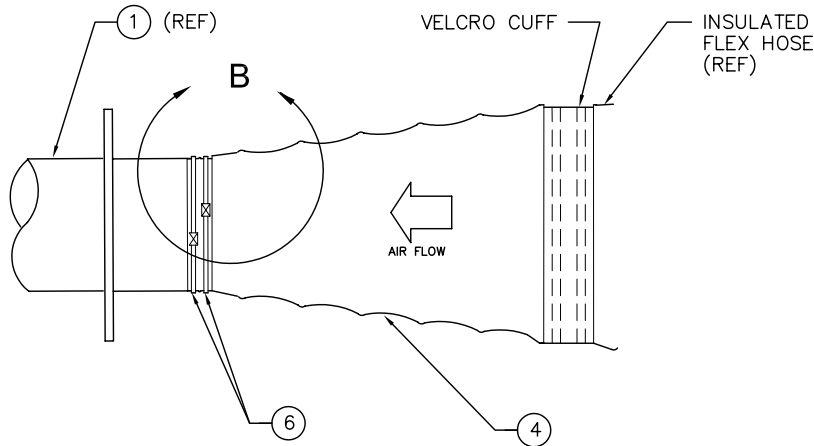


NOTES:
1. WIRES NO. NOT SHOWN FOR CLARITY.

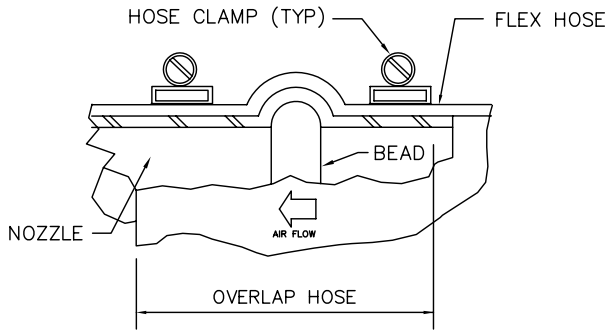


FLEX HOSE ASSEMBLY DETAILS

(SEE TABULATION FOR HOSE LENGTHS)



DETAIL "A"



DETAIL "B"

	100 FT. W/NOZZLE	150 FT. W/NOZZLE	125 FT. W/NOZZLE	100 FT. W/NOZZLE	80 FT. W/NOZZLE	90 FT. W/NOZZLE	85 FT. W/NOZZLE	75 FT. W/NOZZLE	70 FT. W/NOZZLE	50 FT. W/NOZZLE	60 FT. W/NOZZLE	45 FT. W/NOZZLE	60 FT. EXTENSION W/OUT NOZZLE	40 FT. W/NOZZLE	75 FT. W/NOZZLE	65 FT. W/NOZZLE		
2	-	-	-	-	-	-	-	-	-	-	-	-	-	-	-	-	14"ø x 10-FOOT LONG FLAT HOSE	8
1	-	-	-	-	-	-	-	-	-	-	-	-	-	-	-	-	14"ø x 60-FOOT LONG FLAT HOSE	7
2	2	2	2	2	2	2	2	2	2	2	2	-	2	2	2	2	8"ø HOSE CLAMP	6
2	2	2	2	2	2	2	2	2	2	2	2	-	2	2	2	2	14"ø HOSE CLAMP	5
1	1	1	1	1	1	1	1	1	1	1	1	-	1	1	1	1	14"ø x 8"ø x 26" LG. TRANSITION HOSE	4
-	6	5	4	-	2	1	3	2	2	-	1	-	-	3	1	1	14"ø x 25-FOOT LONG FLAT HOSE	3
1	-	-	-	4	2	3	-	1	-	3	1	3	2	-	2	2	14"ø x 20-FOOT LONG FLAT HOSE	2
1	1	1	1	1	1	1	1	1	1	1	1	-	1	1	1	1	8" STD. KOFFLIN GROUND AIR ADAPTER NOZZLE	1
QUANTITY REQUIRED																	DESCRIPTION	ITEM No.
-15	-14	-13	-12	-11	-10	-09	-08	-07	-06	-05	-04	-03	-02	-01	-00		ASSEMBLY NUMBER	
LIST OF MATERIAL																		

REVISIONS

REV	DATE	DESCRIPTION	DWN	APPR

AIR SERVICE HOSE
ATTACHMENT ASSEMBLY

SIZE
DRAWING No.
B 10050140
SCALE : NONE STD\HOSES\50140E-Outline

6/26/00

DRAWN
RPV

CHECKED

DESIGN APPROVAL

APPROVAL

APPROVAL



UNLESS OTHERWISE SPECIFIED
DIMENSIONS ARE IN INCHES.